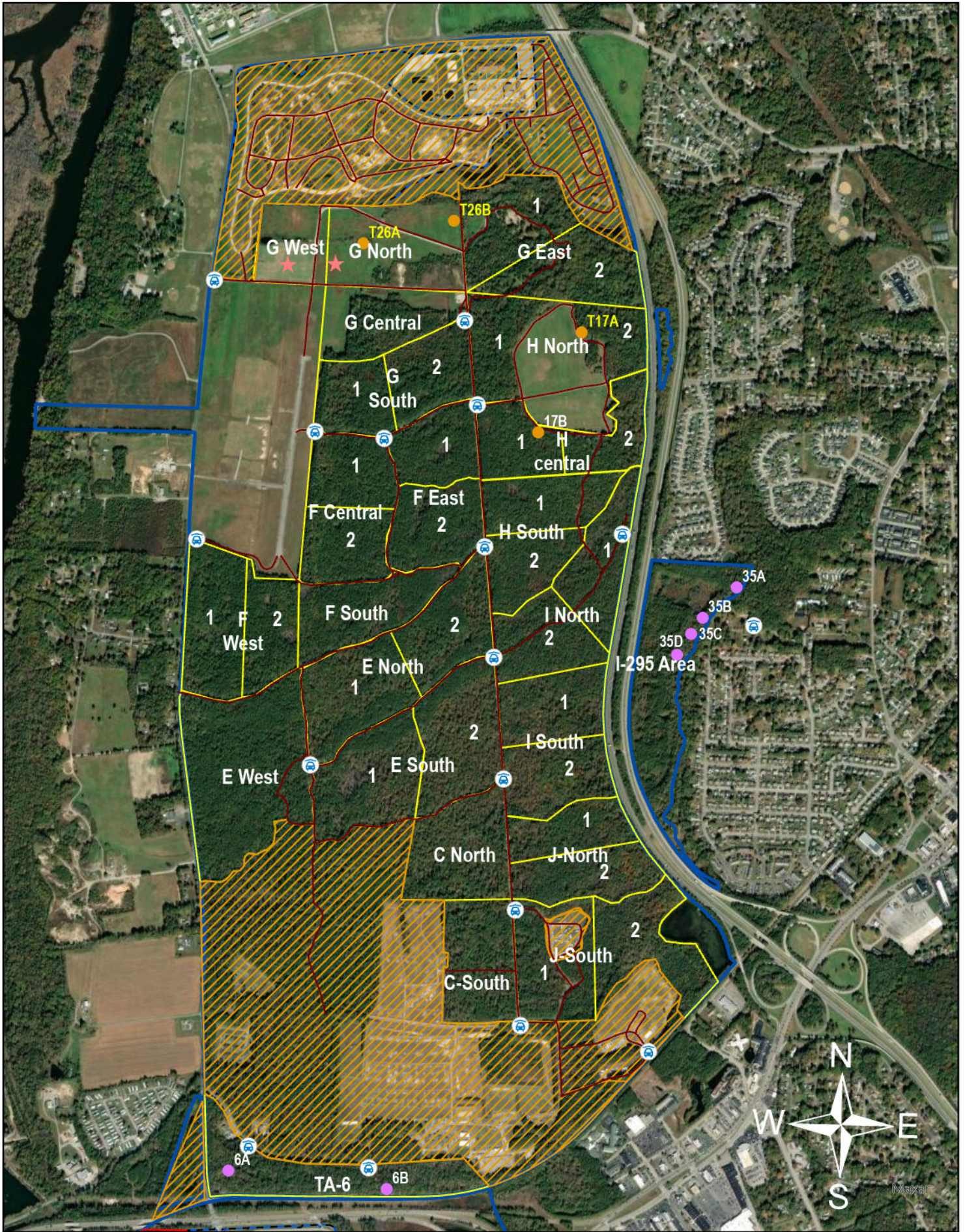


2024 Range Complex Hunting Map



Legend

- Archery Only
- Unfurnished Location
- All Weapons Furnished Stand
- P Parking
- ★ Wildlife Plot
- Maneuver Trails
- Off-Limits
- Training Hunting Areas
- Perimeter Fence
- Boundary



Helpful Notes:

Bright yellow labels indicate tower stands (e.g. T26A).

I-295 hunting area (35A, 35B, 35C, and 35D) has a parking spot on private property off of Burnham Drive. Coordinates for that parking spot are 37.2786042,-77.3248099. You then walk the edge of the property around to a clearing and into the woods.